



46 Chippenham Road | London | W9

£576 Per Week |

 2  2  1  C

ADN
RESIDENTIAL

A recently refurbished two bedroom first-floor apartment, finished to a lovely standard, ideally located just moments from local amenities. The property is a seven-minute walk from Westbourne Park Underground Station (Circle and Hammersmith & City lines) and within easy reach of Warwick Avenue Underground Station and Maida Vale Underground Station (Bakerloo line).

The apartment features a fully fitted modern kitchen with integrated appliances and open plan reception room, two double bedrooms and two bathrooms. (one being en-suite) Additional benefits include double glazing throughout and good storage throughout.

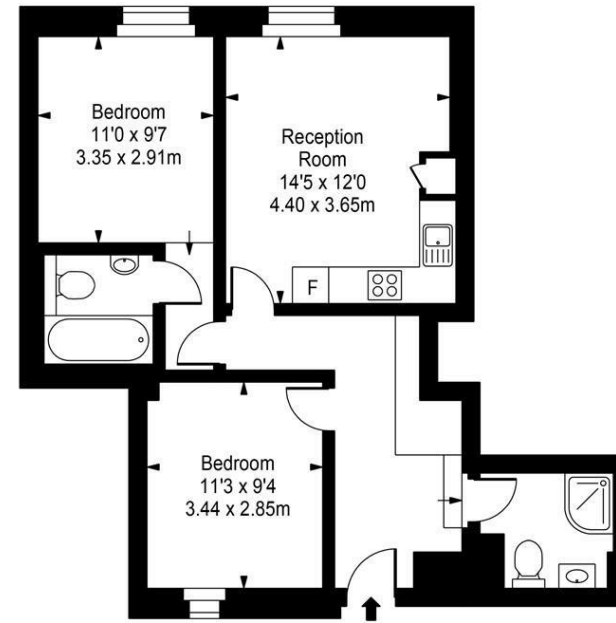
-
- Two Bedrooms
 - Open Plan Kitchen/Reception Room
 - Two Bathrooms
 - Wooden Flooring
 - Double Glazed Windows
 - Great Location
-

Council Tax Band: D
EPC: C



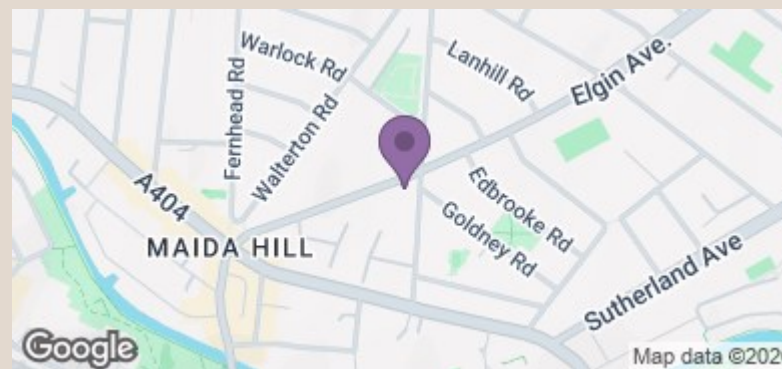


Chippenham Road



First Floor

Approx Gross Internal Area 632 Sq Ft - 58.71 Sq M



Energy Efficiency Rating		Current	Potential
Very energy efficient - lower running costs			
(92 plus)	A		
(81-91)	B		
(69-80)	C	79	80
(55-68)	D		
(39-54)	E		
(21-38)	F		
(1-20)	G		
Not energy efficient - higher running costs			
England & Wales		EU Directive 2002/91/EC	

info@adnresidential.co.uk | 020 7407 5155